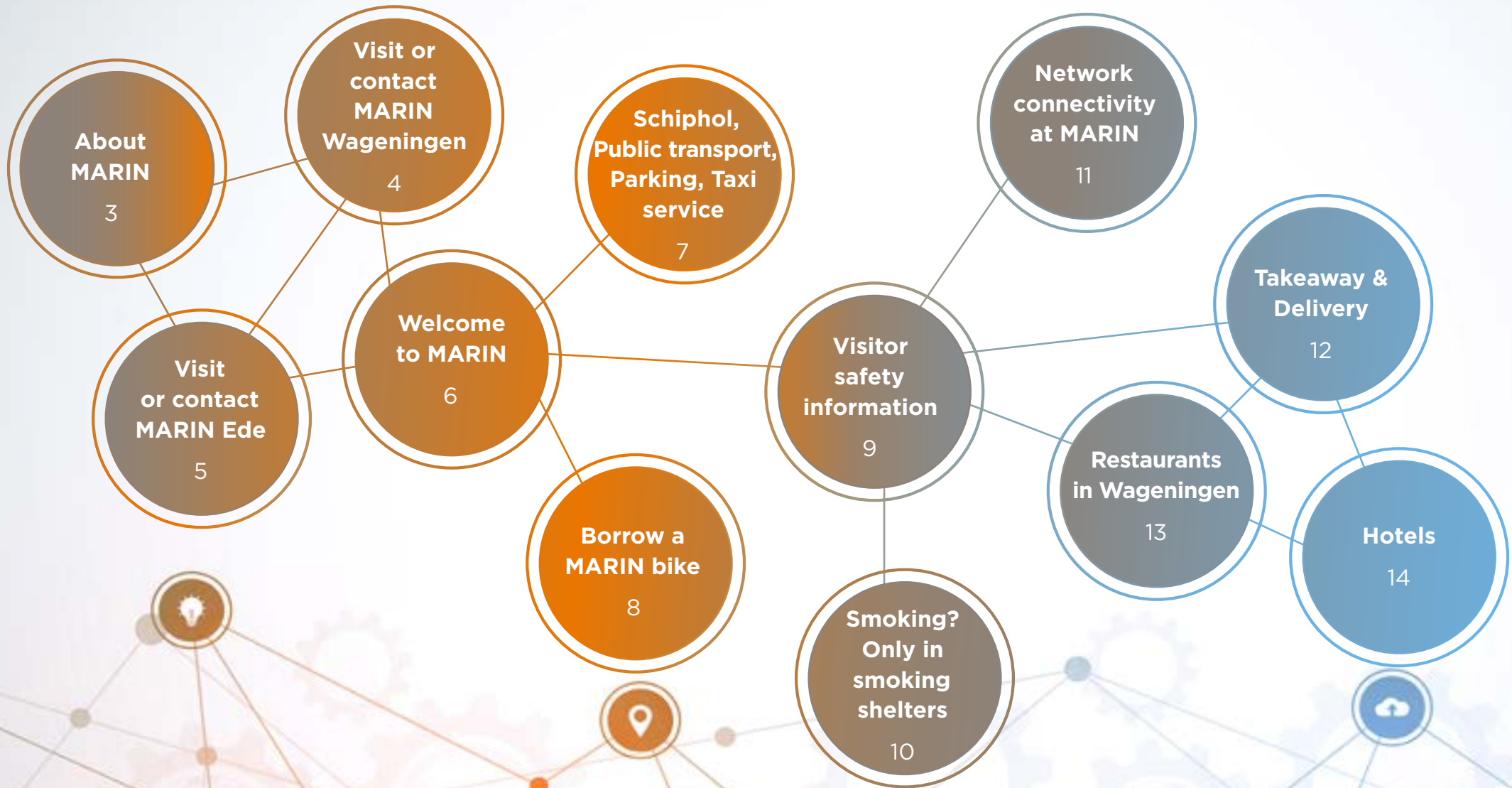




Welcome to MARIN



Contents





About MARIN

MARIN is a world-leading top institute for hydrodynamic and nautical research. Our mission is 'Better Ships, Blue Oceans': we stand for clean, smart and safe shipping and sustainable use of the sea. We do this as an independent knowledge partner for the maritime sector, government and society. We offer integrated solutions, from concept development and design to operation, making optimal use of our test facilities, computer simulations, simulators and full-scale measurements. In developing, applying and sharing our knowledge, we stimulate innovation and global collaboration. The knowledge and engagement of our people are our strength.



Visit or contact MARIN Ede

Marconistraat 20
6716 AK Ede
The Netherlands
T +31 317 49 39 11
E info@marin.nl
I www.marin.nl

Opening hours: 7.30 a.m. - 7 p.m.



Welcome to MARIN

Our main office is in Wageningen. Most of our facilities are located here. Our Ede facility is accessible for project-related visits only.

MARIN Wageningen and MARIN Ede can be reached through the general number +31 317 49 39 11. The reception desk is staffed between 7.30 a.m. - 7 p.m.

We ask you to register at the reception desk on arrival and to keep your badge on display throughout your visit. Visitors must be accompanied by a MARIN employee at all times. On departure please check out and return your visitor badge.



Public transport

Dutch public transport requires a so-called OV-chipkaart, a smart card that can be used for bus, tram, train and metro services. You can buy the OV chipkaart at Schiphol airport, train stations, news agents and in many large supermarkets. <https://www.ov-chipkaart.nl/en/personal-ov-chipkaart>

For an occasional journey you can buy a single ticket from ticket machines or in the 9292 app. Simply order, pay and download your ticket on your mobile. You can also pay and travel with your contactless debit, credit card or mobile phone: www.ovpay.nl/en

Plan and check your trip in the 9292 app or through <https://9292.nl/en> at all times.



Schiphol airport

www.schiphol.nl/en/page/transportation-from-schiphol/
The easiest way to get to MARIN from Schiphol airport is by train and taxi. You can buy a single train ticket in the 9292 app or at the self-service ticket machines at Schiphol airport. Or you can travel by OVpay, <https://www.ovpay.nl/en>

Trains depart from Schiphol airport station (located directly beneath the airport) to Ede-Wageningen station every 30 minutes. Take the intercity train in the direction of Venlo or Nijmegen. You might have to change trains at Utrecht central station. Get off at Ede-Wageningen station (approx. 65 min.) and take a taxi to MARIN at Haagsteeg 2 in Wageningen (approx. 15 min.) Plan and check your trip in the 9292 app or through <https://9292.nl/en> at all times.

Parking at MARIN

The parking spaces at the front of the building are reserved for visitors. We have several charging points available for electric cars.

Taxi service

Leeuwis Taxi and All-Time Taxi are the main companies for taxi service to Schiphol Airport or other destinations. The reception desk is ready to assist you with booking a taxi.

I www.taxileewiswageningen.nl

T +31 317 425 425

I www.all-time.nl

T +31 318 444 444





Borrow a MARIN bike

MARIN stimulates green mobility and offers you, free of charge, the use of a bicycle during your stay in Wageningen.

There is an extensive network of cycle paths in Wageningen and the surrounding area. Maps are available at the reception desk.

It's simple:



- Make a reservation at the reception desk
- Get your key, helmet and raincoat
- During your stay at MARIN or upon departure, park your bike in the covered blue parking
- Upon departure return the key and accessories
- For your safety we supply a helmet and booklet with traffic rules for cyclists

Visitor safety information

In case of an emergency contact your host:

- Only use the emergency exits
- Never use an elevator

Please note the following house rules

- Keep your visitor badge on display at all times
- Photography and filming are not allowed 
- Smoking is only allowed in designated smoking shelters 
- Do not leave valuables, bags or concerns 
- When you cross a blue line or when you see this sign, safety shoes are required
- If you have any security concerns please raise them with your host

Evacuation signal

- Slow woop 

What to do in an emergency?

112 is the national emergency number for life-threatening emergencies.

Non-life threatening emergency numbers:

- Police: +31 (0)900 - 8844
Fire brigade: +31 (0)317 - 412237
Hospital: +31 (0)318 - 434343
Dentist: +31 (0)318 - 434343
Pharmacy: +31 (0)318 - 434945



Wageningen

Assembly points



Ede



Smoking? Only in smoking shelters

Since 1 January 2022, the legal rules regarding the right to a smoke-free workplace have been tightened up. This means that smoking is no longer allowed in and near the MARIN buildings or in any place where others could be affected by it. This applies to regular cigarettes, but also to e-cigarettes.

Employees and visitors are therefore only allowed to smoke in the designated smoking shelters. MARIN can be fined for violating these rules.

<https://www.government.nl/topics/smoking>



Network connectivity at MARIN

Internet

Free internet is available within MARIN. Connect to 'Hotspot' and you will be directed to guests.marin.nl. Create a guest account and fill in the e-mail address of your host, your name and your e-mail address.

An access link will be sent to your host to give you access.

With the same login details you can also use the wired network if your laptop is equipped for this. Network ports are available in every room.

FTP server

If you have access to our FTP in consultation with your host, you can access it via <https://ftp.marin.nl/>. You will receive the corresponding login details from your host.

Pay attention:

For downloading from the FTP or for streaming heavier files, we recommend using the wired network within MARIN if your laptop is equipped for this. Network ports are available in every room.

The MARIN hotspot is a limited connection which you can use to surf the internet or read your emails. If you are still connected to your business environment (such as VPN, CITRIX) this can result in a slow connection.

Client portal

The MARIN client portal is the interface for project file sharing, access digital files, services, and information. Your host can assist to get access.

DOMINO'S PIZZA

Stadsbrink 26-28, Wageningen

www.dominos.nl

www.thuisbezorgd.nl/en/menu/dominos-pizza-wageningen

Italian pizza



Kumo Sushi

Junusstraat 8, Wageningen

www.kumosushi.nl

www.thuisbezorgd.nl/en/menu/kumo-sushi

Sushi



Eastern Express

Tarthorst 1201, Wageningen

www.easternexpress.nl

www.thuisbezorgd.nl/en/menu/eastern-express

Asian



Traditional Grk Souvlaki

Schoolstraat 10, Wageningen

www.traditionalgrk.nl

www.thuisbezorgd.nl/en/menu/traditional-grk-souvlaki

Greek



Turks Eethuis Ilayda

Markt 4, Wageningen

www.turkseethuisilayda.nl

www.thuisbezorgd.nl/en/menu/ilayda

Turkish pizza



Bonnie en Clyde

Churchillweg 19, Wageningen

www.bonnieencyde.nl

www.thuisbezorgd.nl/en/menu/cafetaria-bonnie-en-clyde

Burgers & fries



Takeaway & Delivery

To find a complete overview of restaurants near MARIN for takeaway or deliver, visit www.thuisbezorgd.nl/en



Restaurants in Wageningen

Wageningen has many different restaurants. Here we name a few.



Aziatisch ★4.5
King's Garden
www.kingsgardenwageningen.nl
Stadsbrink 1M
+31 317 42 12 95



Frans ★4.5
Drinks and Bites
www.drinksandbites.nl
Markt 9
+31 317 45 22 22



Frans ★4.5
Foodbar Zilvr
www.foodbarzilvr.com
Heerenstraat 47
+31 6 51 84 32 70



Syrisch ★4.5
Soek Damascus
www.soekdamascus.nl
Hoogstraat 20
+31 317 35 63 14



Frans ★4.5
Eetcafé H41
www.h41.nl
Herenstraat 41
+31 317 42 17 15



Italiaans ★4.5
Sa Lolla
www.salolla.nl
Molenstraat 6
+31 317 41 26 11



Frans ★4.5
Restaurant Bij Blauw
www.restaurantbijblauw.nl
Hoogstraat 12
+31 317 42 11 88



Frans ★4.5
LEV. @ De Wereld
www.levdewereld.com
5 Mei Plein 1
+31 317 46 04 44



BEAU-SAI
Aziatisch ★4.5
Beau Sai
www.wicc.nl/beau-sai
Lawickse Allee 9
+31 6 15 25 29 13



Frans ★4.5
DIELS restobar
www.dielsrestobar.nl
Vijzelstraat 2
+31 317 42 26 94



Frans ★4.5
Wijnbar Petit Louis
www.wijnbarpetitlouis.nl
Bevrijdingsstraat 3-5
+31 317 35 69 75

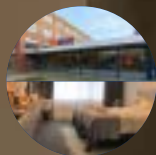
Hotels

De Nieuwe Wereld (hotel school)

Marijkeweg 5, Wageningen
+31 317 49 13 50
www.hoteldenieuwewereld.nl

Distance
from MARIN

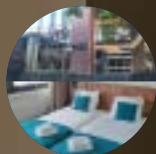
300 m



WICC

Lawickse Allee 9, Wageningen
+31 317 49 01 33
www.wicc.nl

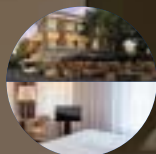
500 m



De Wereld*

5 Mei Plein 1, Wageningen
+31 317 46 04 44
www.hoteldewereld.nl

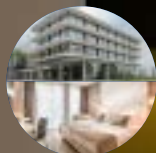
1 km



Fletcher De Wageningsche Berg*

Generaal Foulkesweg 96, Wageningen
+31 317 49 59 11
www.hoteldewageningscheberg.nl

2.8 km



Nol in 't Bosch

Hartensweg 60, Wageningen
+31 317 31 91 01
www.nolintbosch.nl

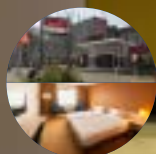
4.5 km



Reehorst, Ede

Bennekomseweg 24
+31 318 75 03 00
www.reehorst.nl

6 km



Fletcher Klein Zwitserland

Klein Zwitserlandlaan 5, Heelsum
+31 317 31 91 04
www.hotelkleinzwitserland.nl

7.5 km



Distance
from MARIN

8 km



De Paasberg

Arnhemseweg 20, Ede
+31 318 65 10 20
www.hoteldepaasberg.nl

8.5 km



Fletcher Hotel Doorwerth

Kabeljauwallee 35, Doorwerth
+31 317 31 90 10
www.hoteldoorwerth.nl

9 km



De Bosrand

Bosrand 28, Ede
+31 318 65 01 50
www.debosrand.com

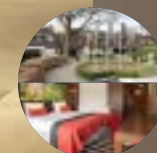
9 km



Fletcher De Buunderkamp

Buunderkamp 8, Wolfheze
+31 264 82 11 66
www.hoteldebuunderkamp.nl

10 km



Fletcher Wolfheze

Wolfhezerweg 17, Wolfheze
+31 263 33 78 52
www.hotelwolfheze.nl

10 km



Van der Valk Veenendaal

Bastion 73, Veenendaal
+31 318 79 90 60
www.hotelveenendaal.com

11 km



De Bilderberg

Utrechtseweg 261, Oosterbeek
+31 263 39 63 33
www.bilderberg.nl

* Hotel with special rate for MARIN clients.
For reservations please contact the hotel of your preference directly.